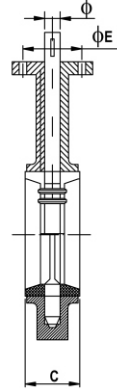
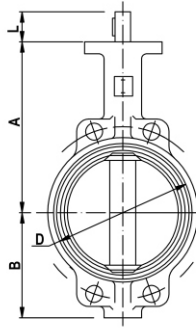
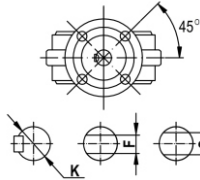


WAFER TYPE BUTTERFLY VALVE. PN 10/16



Technical Data

Size: DN40-DN1000. PN10/PN16
 Working Tem: -45 – 200°C
 Suitable Mediums: Fresh water, Sewage, Sea water, air, oils, acids, salt etc.

Standard

Design acc: To Bs5155, BS EN593 API609
 Face to Face: DIN3202, BS5155, BS EN558, ISO5752
 Top Flange to ISO5122
 Pressure test to BS EN12266-1, DIN3230, BS5155

MATERIAL LIST & DIMENSIONS.

STANDARD MATERIALS OF MAIN PARTS							
ITEM	PART NAME	MATERIAL	ITEM	PART NAME	MATERIAL		
1	Body	ASTM A126CL.B EN-GJL-250	3	Disc	ASTM A536 65-45-12 EN-GJS-400		
		ASTM A536 65-45-12 EN-GJS-400			ASTM A351 CF8,CF8M		
		ASTM A216 WVB 1.0619			ASTM B148 C95400/C95500		
		ASTM A315 CF8,CF8M 1.4308 1.4408			Monel 400 Monel K500		
2	Seat	ASTM AB148 C95400/C95500	6	Stem	ASTM A182 304 316 410		
		HYPALON -18-135°C			Monel 400 K500		
		EPDM -45-135°C			5.8	Bushing	PTFE
		NBR -12-82°C					Bronze
		VITTON -23-150°C			7	"O" Ring	NBR/EPDM
		PTFE +10-200°C			9	Key	Carbon Steel
4	Pin	NEOPRENE -7-93°C	10	Lever	Malleable Cast Iron Aluminum		
		ASTM A182 304 316 410	11	Gear box	Cast Iron		
		MONEL K500					

DN	A	B	C	D	L	E	Top Flange	φ	K	F	S
50	126	80	43	52.6	32	70	F05	12.6	3.18 & 3	10	9
65	134	89	46	64.3	32	70	F05	12.6	3.18 & 3	10	9
80	157	95	46	78.8	32	70	F05	12.6	3.18 & 3	10	9
100	167	114	52	104	32	90	F07	15.77	4.76 & 5	12	11
125	180	127	56	123.3	32	90	F07	18.92	4.76 & 5	14	14
150	203	139	56	155.7	32	90	F07	18.92	4.76 & 5	14	14
200	228	175	60	202.4	45	125	F10	22.1	4.76 & 5	17	17
250	266	203	68	250.7	45	125	F10	28.45	6.35 & 8	22	22
300	291	242	78	301.5	45	125	F10	31.8	6.35 & 8	22	22